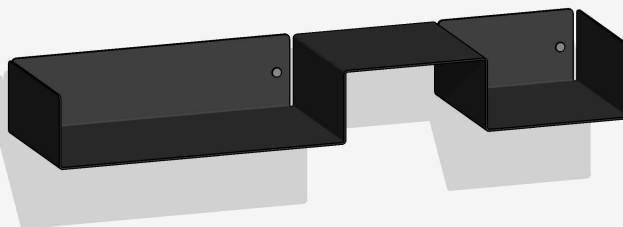


left

right



# Shelf 8880

## Description

This versatile shelf stands out with its rhythmic design, bringing balance and structure to any interior. Its unique construction allows it to be placed upside down, offering flexibility and adaptability to suit your space and style. Whether used as a standalone piece or part of a larger arrangement, this shelf combines functionality with a distinctive aesthetic, making it a perfect addition to modern and dynamic interiors.

## Dimensions

Height: 9cm      Width: 72cm      Depth: 20cm  
Weight: 3kg

## Material

Steel. All components are crafted from powder-coated steel, featuring a refined textured finish.

## Production

Made in Romania

## Warranty

Zero Studio products include 2-years warranty.

## Additional information

Supports up to 10kg maximum load capacity, provided it's properly mounted onto an appropriate wall.  
Comes with a wall mounting kit for secure installation.  
Features a special scratch-resistant powder coating.  
Comes packed in one durable box to ensure security during transportation.

## Care and Maintenance:

Clean with a soft cloth and mild, non-abrasive detergent.  
Use lukewarm water, avoiding strong cleaning agents.  
Ensure surfaces are dried thoroughly to protect the coating.  
Keep away from solvents, ammonia, and harsh chemicals.  
Indoor use recommended unless otherwise stated.